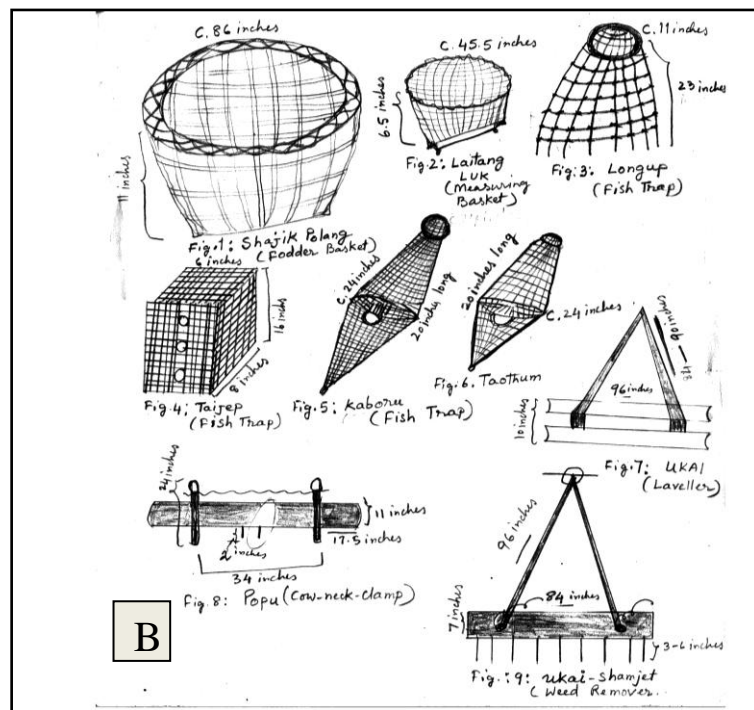


Plate I



A. Md Abdul Gaffar, traditional healer (Maiba) with one patient; B: (1) Shajik Polang (Fodder Basket), (2) Laitang Luk (Measuring basket), (3) Longup (Fish trap), (4) Taijep (Fish trap); (5) Kaboru (Fish trap), (6) Taothum (Fish trap), (7) Ukai (Leveler), (8) Popu (Bullneck-clamp), (9) Ukai Shamjet (Weed remover).

Plate II



A: *Eclipta prostrata* (L) L with Maiba (traditional healer) Md Kayamuddin Fundreimayum with Researcher, B: *Lindernia ruellioides* (Colsm) Pennel; C: *Alpinia allughas* (Retzius) Roscoe, D: *Melothria perpusilla* (Blume) Cogn., E: Various seeds of cultivated plants; F: *Desmodium triflorum* (L) DC.

Plate III



A: *Sapindus trifoliatus* L (Fruits); B: Bamboo support for coiling threads; C: *Celtis timorensis* Span.; D: *Myriogyne minuta* (G.Forst.) Less.; E: *Alternanthera philoxeroides* (Mart.) Griseb.(preparing poultry food); F: *Stellaria media* (L)

Plate IV



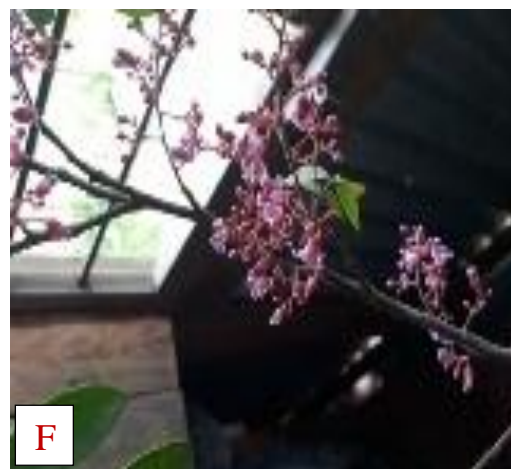
A: *Pogostemon cablin* (Blanco) Benth.; B: *Hydrocotyle sibthorpioides* Lamk. C: *Kyllinga brevifolia* Rottb.; D: *Fragaria nilgerrensis* Schltl. Ex. J Gay; E: *Nymphae pubescens* Willd.; F: *Oxalis corniculata* L.

Plate V



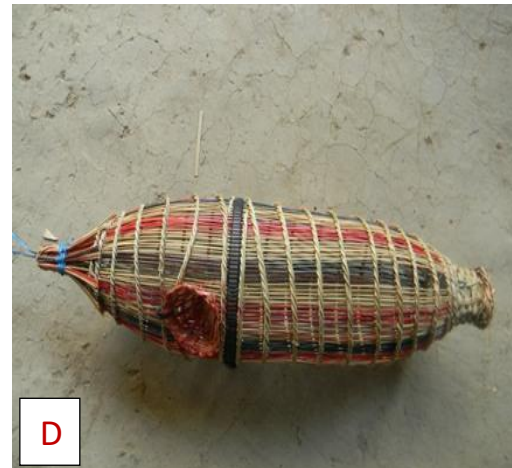
A: *Allium ramosum* L; B: *Curcuma angustifolia* Roxb.; C: *Hedychium coccineum* Buch.-Ham.ex. Sm; D: Plant collection; E: *Plantago major* L; F: *Hedyotis auricularia* L.

Plate VI



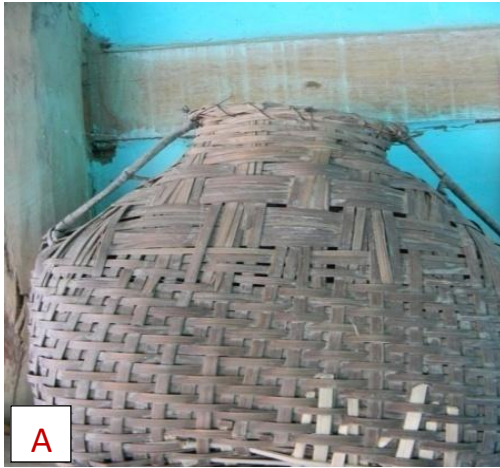
A: *Magnolia macrophylla* L; B: *Carthamus tinctorius* L; C: *Phyllanthus emblica* L; D: *Meyna spinosa* Roxb. ex Link (Flower) E: *Osbeckia nepalensis* Hook.f.; F: *Averrhoa carambola* L.

Plate VII



A. Book Stand (*Leihun*); B: Teeth brush Stand (*Yathin Utong*); C: Fodder Basket (*Shajik Polang*); D: Loo (Fish trap); E: Bull neck-clamp for Ploughing (*Popu*); F: Artisan with vegetable basket;

Plate VIII



A: Nga Tongol(Fish Sac); B: Ladder, (Keirak); C: Spear (Long); D: Long Slices of bamboo for making house wall; E: Paddy field weed remover (Ukai Shamjet); F: *Utong and Nachei* used in waist-loom (2nd & 3rd from Right).

Plate IX



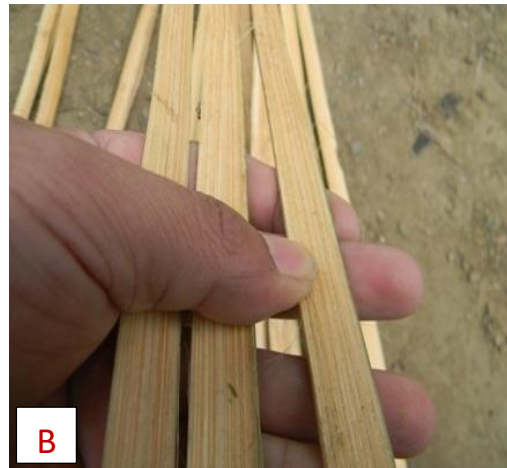
A: Cultivation of Vegetables in house Garden; B: Tools of waist-loom including *Pangaldem* (wooden needle); C: Md.Habibullah, Artisan, Keibung Village; D: Slice of Bamboo (*Wachet*); E: *Paya* (thin slice of bamboo) for making *Loo* (Fish trap); F: *Bambusa nutans* Wall. Ex Munro

Plate X



A: *Hangel* (fish net housing); B: *Kharai* (Spread Sheet); C: *Phoura* (Spread sheet); D: *Bambusa kingiana* Gamble (*Watangkhohi*); E: *Yengol* (Poultry House) made by bamboo; F: Bamboo handle of Spade

Plate XI



A: Roofing with Bamboo; B: Thin Slice (*Paya*) of *Bambusa kingiana* Gamble. for making *YenPolang*(Poultry Basket); C: Md Azizuddin, Artisan, Sangaiyumpham Cherapur; D: Dom Shaped Basket to house poultry; E: *Kapon* (Cloth Basket); F: Paddy Measuring Basket (*Laitangluk*).

Plate XII



A: *Bambusa tulda* Roxb.(Saneibi); B: *Melocanna bambusoides* Trin.(Moubi); C: *Dendrocalamus sericeus* Munro. (Ui); D: *Bambusa nana* Roxb. (Khokwa); E: Md Islamuddin, Artisan, Lilong; F: *Dendrocalamus membranaceus* Gamble (Unan).

Plate XIII



A: *Yenshang Polang* (Vegetable's basket); B: *Longup* (Fish trap); C: Hookah made of coconut shell; D: (L) Md. Enamuddin Bogeemayum with Hookah; E: Roofing of the house done with *Imperata cylindrica* (L) Raeusch; F: (L) Md. Rahimuddin Bogeemayum with *Tasbih* made of *Coix lacryma-jobi* L.

Plate XIV



A: Seeds of *Ziziphus mauritiana* Lam. to use in a religious function called *Lik Chatpa*; **B:** Seeds of *Coix lacryma jobi* L for use in Religious functions in *Lik chatpa* /*Wajifah*/*Tasbih Chatpa*; **C:** Leaf of *Musa balbisiana* L use in Marriage Meal and people sit on mat made of *Scirpus mucronatus* Roxb.; **D:** Selling of *Salvadora persica* L (Chewing stick) in village market; **E:** *Phoenix dactylifera* L domesticated in Hiyangthang Village; **F:** Seeds of *Hibiscus cannabinus* L.

Plate XV



Sci.: *Alternanthera philoxeroides* (Mart.) Griseb.



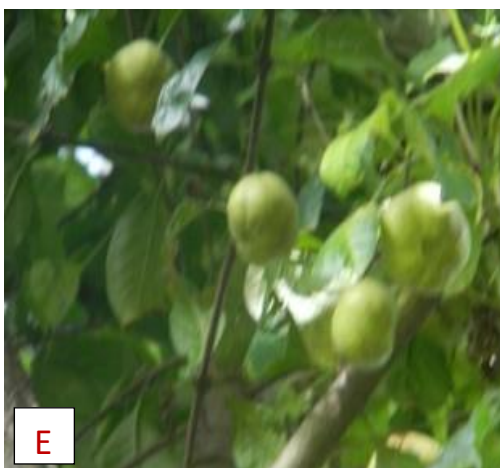
A: Placing a branch of *Ziziphus mauritiana* Lam. in Muslim grave; B: *Mangifera indica* L; C: *Zea mays* L; D: *Allium sativum* L; E: *Alternanthera philoxeroides* (Mart.) Griseb; F: Plant Collection with Haji Manouwer Ali (Maiba).

Plate XVI



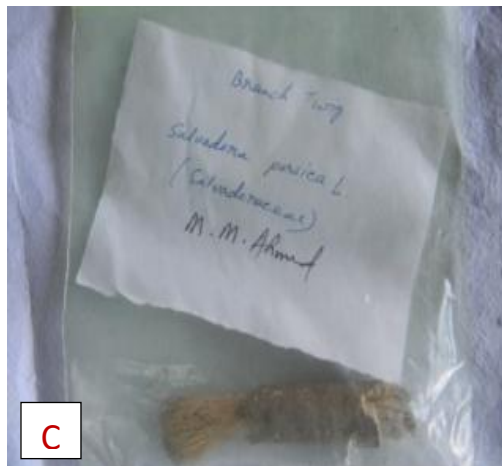
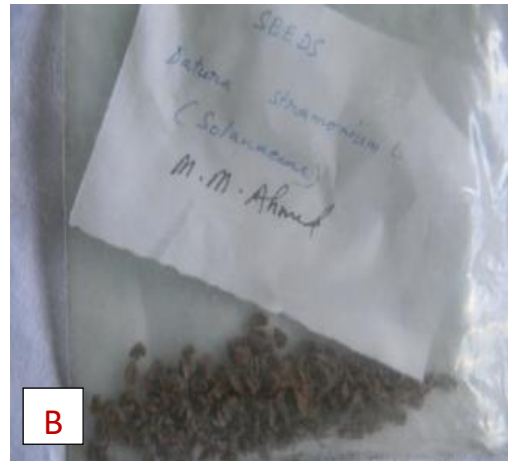
A: Mother and Son, traditional healer; B: Bamboo shoot preparation; C: *Tagetes erecta* L; D: *Capsicum frutescens* L; E: *Mirabilis jalapa* L; F: *Saccharum officinarum* L

Plate XVII



A: Herbarium comparison at BSI, Shillong; B: Myself (Mohd Mustaque Ahmed) with Scientist & HOD, BSI, Shillong; C: *Brassica rapa*L; D: *Grewia microcos* L (Fruit); E: *Meyna spinosa* Roxb. Ex. Link.(Fruit) ; F: *Imperata cylindrica* (L) Raeusch (Herbarium).

Plate XVIII



A: *Areca catechu* L (Seed); B: *Datura stramonium* L (Seeds); C: *Salvadora persica* L (toothbrush); D: *Riccia natans* L; E: *Rhus chinensis* Mill. (dried fruit); F: *Hydrocotyle* sp.

Plate XIX



A: Research Scholar with Maiba (traditional healer); B: *Luffa cylindrica* (L) M. Roem; C: *Nymphae pubescens* Willd (Rhizome); D: *Curcuma longa* L, (Rhizome); E: *Pisum sativum* L, Seed; F: *Hibiscus cannabinus* L with flower.

Plate XX



A: *Coriandrum sativum* L, Seeds; B: *Tongrak* (Sheath) of *Dendrocalamus giganteus* Munro; C: Maiba (local physician), Md Islaoddin with Researcher.